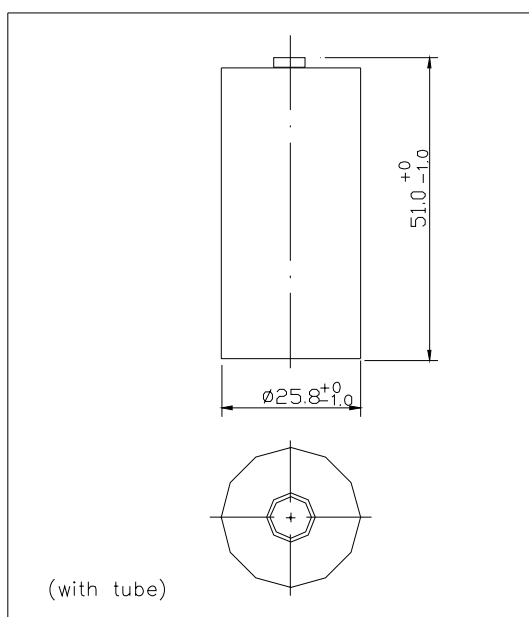


Single Specification		
Product Name		Sealed Nickel Metal Hydride Cylindrical Rechargeable Battery
Model		EJH-C4500
Nominal Voltage		1.2V
Nominal Capacity		4500mAh
Dimension (with tube)	Diameter	25.8 ⁺⁰ _{-1.0}
	Height	51.0 ⁺⁰ _{-1.0}
Internal Resistance at 1000Hz		≤ 10mΩ (After charge)
Charge	Standard	450mA × 16h
	Rapid	1350mA × 5h
	Trickle	135~225mA
Discharge Cut-off Voltage		1.0V
Cycle Life		≥ 500 Cycles
Ambient Temperature	Standard Charge	0°C to 45°C
	Rapid Charge	10°C to 40°C
	Trickle Charge	0°C to 45°C
	Discharge	-45°C to 50°C
	Storage	-45°C to 45°C
Ambient Humidity		65±45%



General Characteristics

